

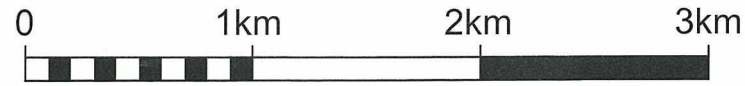
# Been there, Done that Rogaine

WARA 6 Hour Rogaine. 19th March 2011



## LEGEND

SCALE 1:33,333, 5 metre contour interval



- Building
- Control
- Contours
- Dams
- Forest Boundary
- Hash House
- Magnetic North Line
- Out of Bounds
- Road - Bitumen
- Road - Major Gravel
- Road - Minor, or Farm Track
- Watercourse
- Water Drop
- Patrolled Road

## SETTERS AND VETTERS

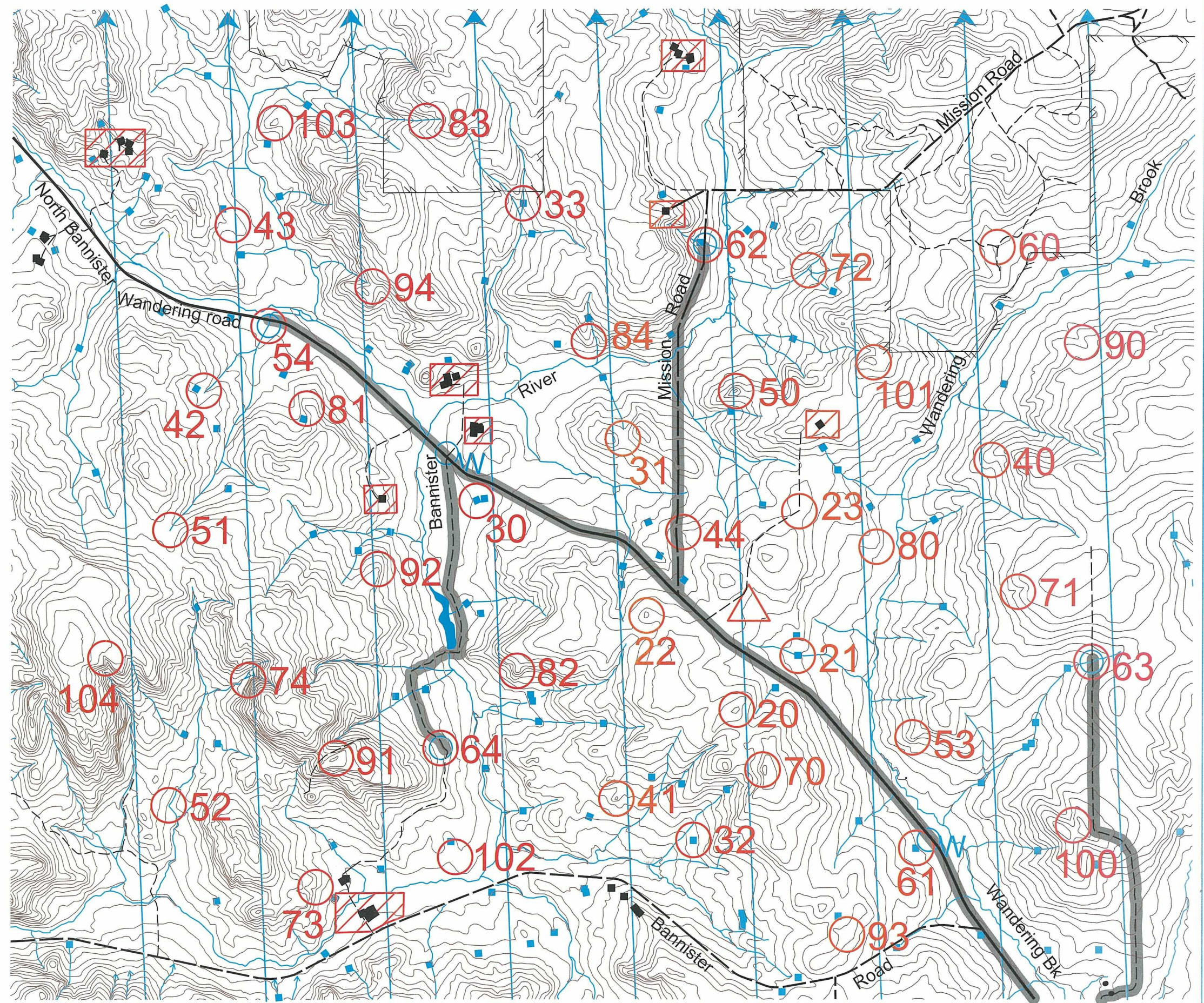
Pip Milton            Jutta Birmingham  
 Ian Thomsett        Jim Langford

## SPECIAL THANKS TO THE FARMERS

Bob and Inez Treasure  
 Steve and Marie Watts  
 Malcolm and Noelene Treasure  
 Max and Virginia Watts  
 Paul and Monica Treasure  
 Southern Aboriginal Land Corporation

This map was produced using OCAD.  
 Data supplied by DOLA and used under  
 copy licence 393/93.

Possession of this map does not give  
 Right of entry to this area.





## Been there, Done that 6 hour Rogaine - 19 March 2011

No	Description	Pts
20	The knoll	20
21	The dam, 30m at 330 degrees	20
22	The knoll	20
23	The track bend	20
30	The dam, 50m at 270 degrees <b>(Water drop nearby)</b>	30
31	The saddle, 20m at 218 degrees	30
32	The dam, 30m at 60 degrees	30
33	The dam, northern end	30
40	The spur	40
41	The knoll, with large boulders	40
42	Water course, northside	40
43	The spur, boulders	40
44	The spur	40
50	The knoll	50
51	The watercourse	50
52	The creek bend, west side	50
53	The spur	50
54	The watercourse <b>(Water drop)</b>	50
60	The track junction	60
61	The dam, east side <b>(Water drop)</b>	60
62	The gully/road junction <b>(Water drop)</b>	60
63	The fence watercourse intersection <b>(Water drop)</b>	60

No	Description	Pts
64	The track <b>(Water drop)</b>	60
70	The knoll	70
71	The gully, head of	70
72	The western watercourse junction	70
73	A bare rock surface, west edge	70
74	A steep rock surface, foot of	70
80	The spur	80
81	The spur	80
82	The spur	80
83	The watercourse	80
84	The spur	80
90	The gully	90
91	The knoll, north part	90
92	The spur	90
93	A knoll	90
94	The saddle, 20m at 110 degrees	90
100	The gully, upper part	100
101	The knoll	100
102	A boulder 1m, north side	100
103	The knoll, 30m south west	100
104	The gully, upper part	100

Event Information
Start: 3:00pm Saturday
Finish: 9:00pm Saturday
Sunset: 18:30
Moonrise: 17:54
Late Penalty: 10 points per minute or part minute
You will be LATE (no points) if later than 9:30pm Saturday
Controls used: 43
Total Points: 2650
Water drops: 54, 61, 62, 63, 64 and one a short distance from 30

**If a team member becomes sick or injured, please make your way to a water drop or a patrolled road which are indicated on the map.**